



Gateway

Volume 12 Issue 2

March - April 2026

President's Message



Dear Friends,

At the time of writing, the war in the Middle East is entering its third month with little to no signs of the warring parties coming to any comprehensive agreement. It is no wonder then that Finance Ministers and Central Bank Governors attending the Spring

meetings of the IMF and The World Bank in Washington appeared so concerned as to warrant a serious warning: if energy and supply disruptions continue, the international system may be in for a global recession.

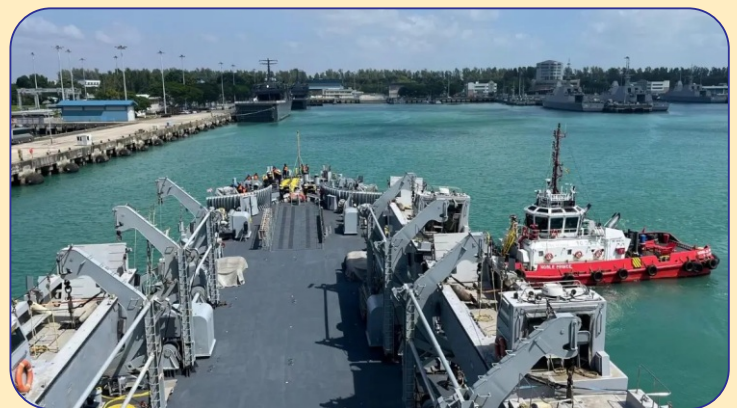
India leads the global growth forecast with 6.5 percent much higher than other major economies of the United States and Europe. China is expected to register a growth rate of about 4.5 percent; Russia and Europe around 1 percent. The United States' GDP is expected rise to 2.4 percent in 2026 from 2 percent the previous year but this had to be seen in the context of risks from global conflicts, high levels of debt and inflation. And Japan's economic growth is expected to be steady but moderate and in the neighborhood of about 0.8 percent real GDP growth rate for 2026, the slower rate passed off on account of global headwinds. But all of these assumptions and projections could be tossed out if the price of oil is not seen as being stable and in a worse case scenario of global growth dipping to 2 percent from a projected 3.3 percent and in the process paving the way for a global recession. Naturally the worst affected are the emerging market economies especially the developing nations in South Asia that are facing the brunt of energy supplies and dwindling remittances from their nations in the now war torn areas of the Middle East and the Gulf.

In the midst of all the gloom and doom there is also the conviction that countries like India and Japan will individually and together take steps to strengthen bilateral relations as also contribute to the depth and width of the QUAD and the Indo Pacific region.

At the Indo Japan Chamber of Commerce and Industry we are making use of every opportunity to showcase not just the economic dimension but also of the educational and cultural bonds of a long and enduring friendship that adds more hope for the future.

Regards,
S. Padmanabhan

SEA DRAGON 2026



Exercise Sea Dragon 2026 successfully concluded at Andersen Air Force Base, Guam, March 28, marking the completion of 20 days of intensive multinational antisubmarine warfare training. The US-led multinational exercise included Australia, India, Japan and New Zealand. Japan Maritime Self-Defense Force's VP-3 squadron won the prestigious Dragon Belt, taking it from the previous holder, the Royal Australian Air Force (2025 winner). The exercise aimed to strengthen interoperability, improve ASW coordination, and enhance security in the Indo-Pacific region.

Mass Production of advanced Semiconductors from 2027 - Rapidus working to Promote human resource development

Rapidus Corp. will begin mass production of advanced semiconductors in Japan in early 2027, factory is now being readied in Chitose, Hokkaido, and is scheduled to start operation in April. "A total of about 230 units of equipment will be delivered by the end of March. After that, we'll set up the pilot line and start producing samples," according to its Chairman. The company is currently hiring 30 to 40 engineers every month, mainly people who were involved in the semiconductor industry when Japan accounted for about 50% of the world market in the 1980s. The company believes that in the future there will be a severe shortage of human resources, a project to address this issue is currently underway with the government and universities. The company is working with the University of Tokyo, Tohoku University and other institutions to develop a curriculum for human resource development, and are considering sharing this curriculum nationwide, said Mr. Higashi, Chairman of Rapidus. Rapidus plans to produce 2 nanometer semiconductors as they consume less energy than current semiconductors, they are expected to be in demand in a wide range of areas, including the creation of artificial intelligence.

(The Yomiuri Shimbun)

Indian export update

India's overall exports (goods and services) reached roughly US\$ 720.76 billion from April 2025 to January 2026, marking a 6.15 % growth despite global headwinds. Key growth drivers include electronics, engineering goods, and pharmaceuticals. However, textiles are facing sluggish demand, and Middle East conflict risks are impacting trade.

Recent Developments (As of early 2026) :

- **Canada Deal:** India and Canada have targeted \$50 billion in trade by 2030, including a \$2.6 billion uranium deal.
- **Manufacturing Focus:** The "Make in India" initiative, supported by PLI schemes, is strengthening electronics and engineering goods exports.
- **Regional Focus:** India is working to diversify exports with increasing market share in Europe

New International Airport in India

The Noida International Airport (DXN) in Jewar, Uttar Pradesh, inaugurated by Prime Minister Modi on March 28, 2026 is India's newest major international airport. It aims to act as a crucial hub for the National Capital Region (NCR), easing congestion at Delhi's IGIA with initial capacity for 12 million passengers. Situated in Jewar, Uttar Pradesh, providing easy access to the "golden triangle" of Delhi, Agra, and Jaipur, features a 3,900-meter runway with a dual Instrument Landing System for low-visibility operations. Phase 1 will handle 12 million passengers, with expansion plans to eventually serve 70 million passengers annually by 2050.

Other Upcoming International Airports in India:

- **Chennai Parandur Airport:** A second airport for Chennai planned to handle increased passenger demand.
- **Dholera International Airport (Gujarat):** Part of the Dholera Smart City project.
- **Bhogapuram International Airport (Andhra Pradesh):** Serving the region around Visakhapatnam.
- **Purandar Airport (Pune):** Planned to replace the current constrained Pune international airport.

These projects are part of India's goal to upgrade aviation capacity to handle over one billion passengers in the coming years.

Human Washing Machine

The futuristic human washing machine envelops the entire body in warm water containing fine bubbles, removing dirt such as sebum. Its main feature is being environmentally friendly, as the machine does not use soap or shampoo. With calming visuals and music played in response to the user's heart rate, 'trial sessions during the Expo proved so popular that reservations filled up immediately', reports Japanese media.

(Japan News)



With best compliments from

SATTVA
Logistics Group



Bonsai & Suiseki Exhibition Inaugurated by Consul-General of Japan in Chennai



On 10th April Hon'ble Mr. Takahashi Muneo, Consul-General of Japan in Chennai inaugurated a two-day Exhibition and Demonstration of Bonsai and Suiseki at IJCCI premises. Mr. N. Ravi, Director, 'The Hindu' Group, Mr. Koichi Takahashi, Vice-Chairman of the Japanese Association in Chennai & Consul-General from the Consulate - General of the Federal Republic of Germany Mr. Michael Hasper participated in the Lighting of the Lamp Ceremony. The Exhibition on 11th & 12th April attracted a good number of viewers, of all ages, also participated in the Live Demonstration on both days.



NASA - The Artemis II astronauts record-breaking trip around the moon

After traveling deeper into space than any other humans, the Artemis II astronauts pointed their moonship toward home on 6th April, wrapping up a lunar cruise that revealed views of the far side never beheld by eyes until now. Their flyby of the moon even included some celestial sightseeing besides yielding rich science - a significant step toward landing boot prints near the moon's south pole in just two years.

(The Hindu)

The Orion Spacecraft, the Earth and the Moon are seen from a camera as the Artemis II crew and spacecraft travel farther into Space, on April 6, 2026



BEML-DMRC signs MoU

BEML and DMRC signed a strategic MoU on April 8, 2026, to jointly bid for and execute metro rail projects in India and internationally, focusing on West Asia. This partnership shifts BEML from a equipment supplier to an EPC (Engineering, Procurement, and Construction) partner for DMRC, aiming for indigenized technology.

Key Joint Initiatives & Recent Projects

- **Strategic Alliance (2026):** The MoU enables both entities to collaborate on metro projects, high-speed rail, and Regional Rapid Transit Systems (RRTS).
- **Global Expansion:** The partnership aims to leverage BEML's manufacturing expertise in rolling stock and DMRC's project execution capabilities to expand into global markets.
- **Indigenous Technology:** A key focus is developing indigenous Propulsion Systems and Tunnel Boring Machines (TBMs) to reduce dependence on foreign technology under the Atmanirbhar Bharat initiative.
- **Overseas Growth:** BEML recently secured its first overseas order for Metro Rolling Stock (\$60 million) in Africa on March 18, 2026, marking a significant export milestone.
- **Delhi Metro Expansion:** The collaboration will support upcoming DMRC projects, including the 16 km Phase 5A expansion and operational improvements on the Pink and Magenta lines.

This partnership aims to offer comprehensive "end-to-end" metro solutions, combining BEML's manufacturing strength with DMRC's operational expertise

India eases rules for rice exports to some European countries

India has eased export rules for Basmati and non-basmati rice. It can now be shipped to certain European nations, without the usual inspection certificate from its export agency. This exemption is for a period of six months. The rule applies to EU member states, the United Kingdom, Iceland, Liechtenstein, Norway, and Switzerland, other European countries are already exempt.

Indian Economy is surging

As of April 2026, the Indian economy shows resilience with a projected FY26 GDP growth of 6.6%-6.9%, amid risks from high oil prices and global volatility. Driven by robust manufacturing and services, the economy is shifting toward 3rd largest globally, with inflation easing to 0.3% (Oct 2025) and fiscal consolidation targeting 4.4% deficit. Growth Outlook: India's real GDP growth in Q1 FY26 was 8.2%, driven by manufacturing and government capital expenditure. Manufacturing and Services: In late 2025, manufacturing showed strong growth (9.7%) and services expanded by 9.5%. Inflation & Rates: CPI inflation dropped to an all-time low of 0.3% in October 2025 due to lower food prices and GST adjustments. Infrastructure: Significant investments continue with projects like the Delhi-Dehradun Expressway. External Sector: The rupee has faced pressure, touching record lows against the US Dollar (near 92.5). Trade & Digital: Service exports remain a key pillar, supported by high AI skill penetration and 1,700+ Global Capability Centers. The risks include: Elevated crude oil prices and ongoing geopolitical tensions in the Gulf region, global economic growth slowdown and potential for capital outflows and the impact of US tariffs has had a marginal effect on non-oil exports. *(Deloitte)*

Cherry Blossoms in Full Bloom

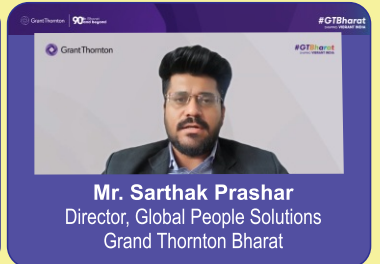
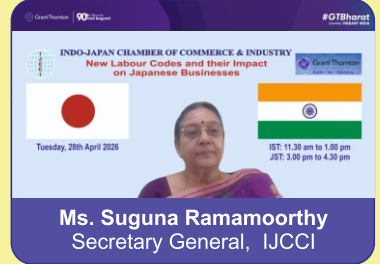


Tulips in full bloom in Chiba's Agricultural Park



Webinar on New Labour Codes and their Impact on Japanese Business

Webinar on New Labour Codes and their Impact on Japanese Business was organised by IJCCI and Grant Thornton Bharat on 28th April. The webinar was co-hosted by the Consulate-General of India for Osaka-Kobe, METI, The Kansai Bureau of Economy, Trade and Industry & the Indian Chamber of Commerce Japan in Osaka. The Osaka Chamber of Commerce and Industry supported the webinar. The webinar received an overwhelming response from the Japanese business community. A Resource Paper on the subject has been brought out by IJCCI, being circulated to all participants to serve as a ready reckoner.



The Indo-Japan Chamber of Commerce and Industry will be conducting a multi-sector delegation to Japan in September 2026.

Organisations interested can write to : indo-japan@ijcci.com